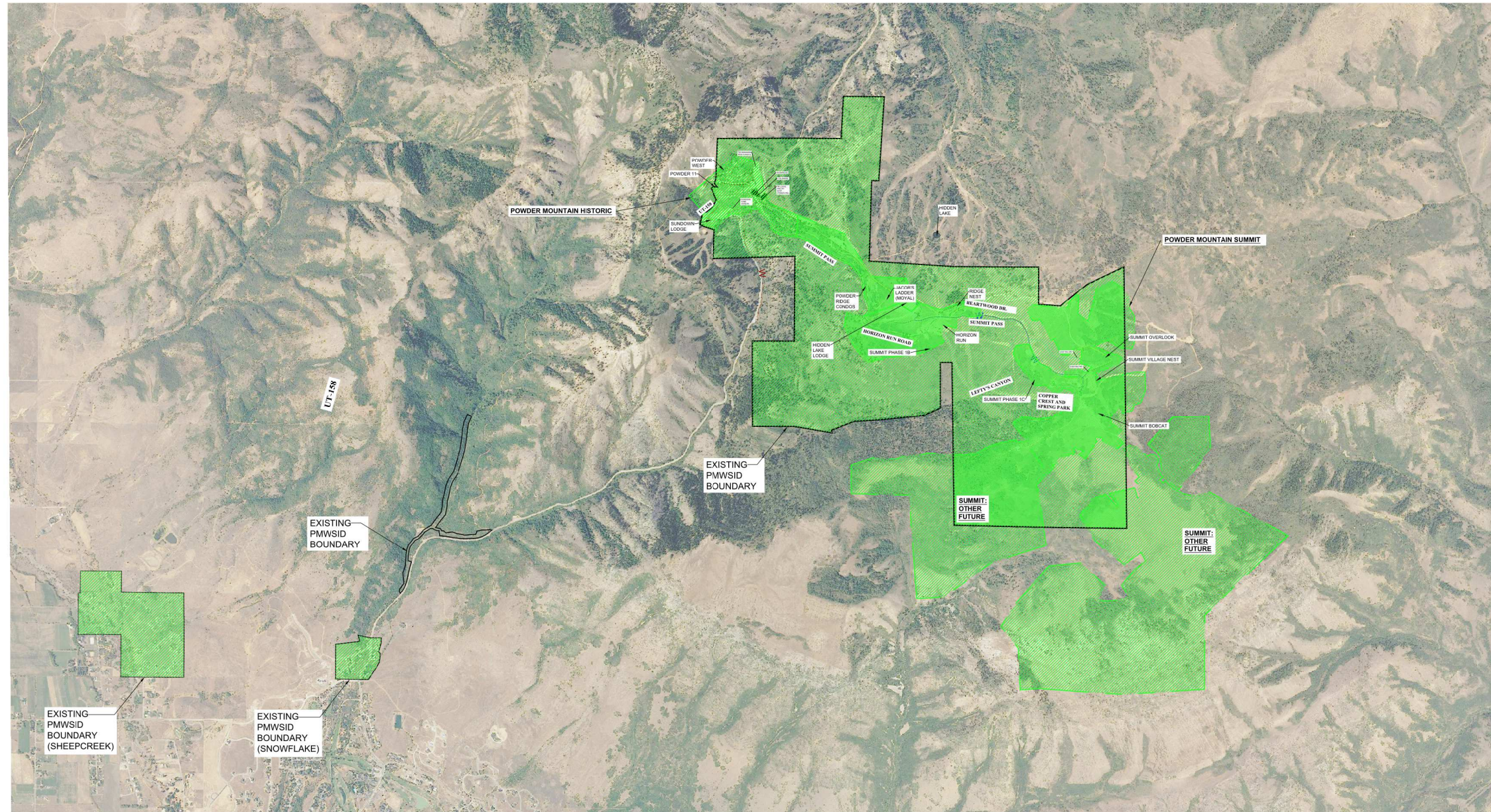
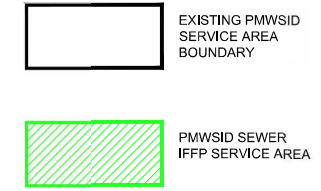
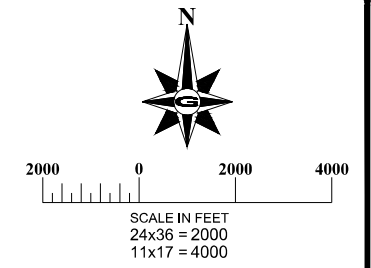


REVISION: 09/13/21



GILSON ENGINEERING
 Consulting Engineers & Surveyors
 12401 SOUTH 450 EAST BUILDING C, UNIT 2, DRAPER, UT 84020
 PHONE: (801) 871-9414 FAX: (801) 871-9449

POWDER MOUNTAIN WATER SEWER IMPROVEMENT DISTRICT

REV	DATE	BY	COMMENTS

DATE: DECEMBER 2020
 DRAWING NAME: OVERALL SITE
 DESIGNED/DRAWN BY: JMBP
 CHECKED: APPROVED

SEWER IFFP SERVICE AREA
 PIZEL SPRING #3 & BOOSTER PUMP STATIONS #1, #2 & #3 REHABILITATION PROJECT
 POWDER MOUNTAIN WATER & SEWER IMPROVEMENT DISTRICT
 WEBER COUNTY, UTAH

REVISION:

PROJ. # **PMW.015**

SEWER 1-1