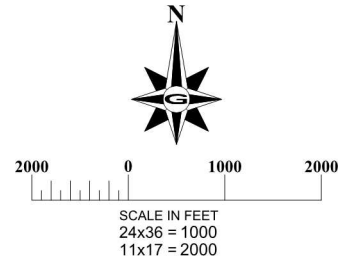
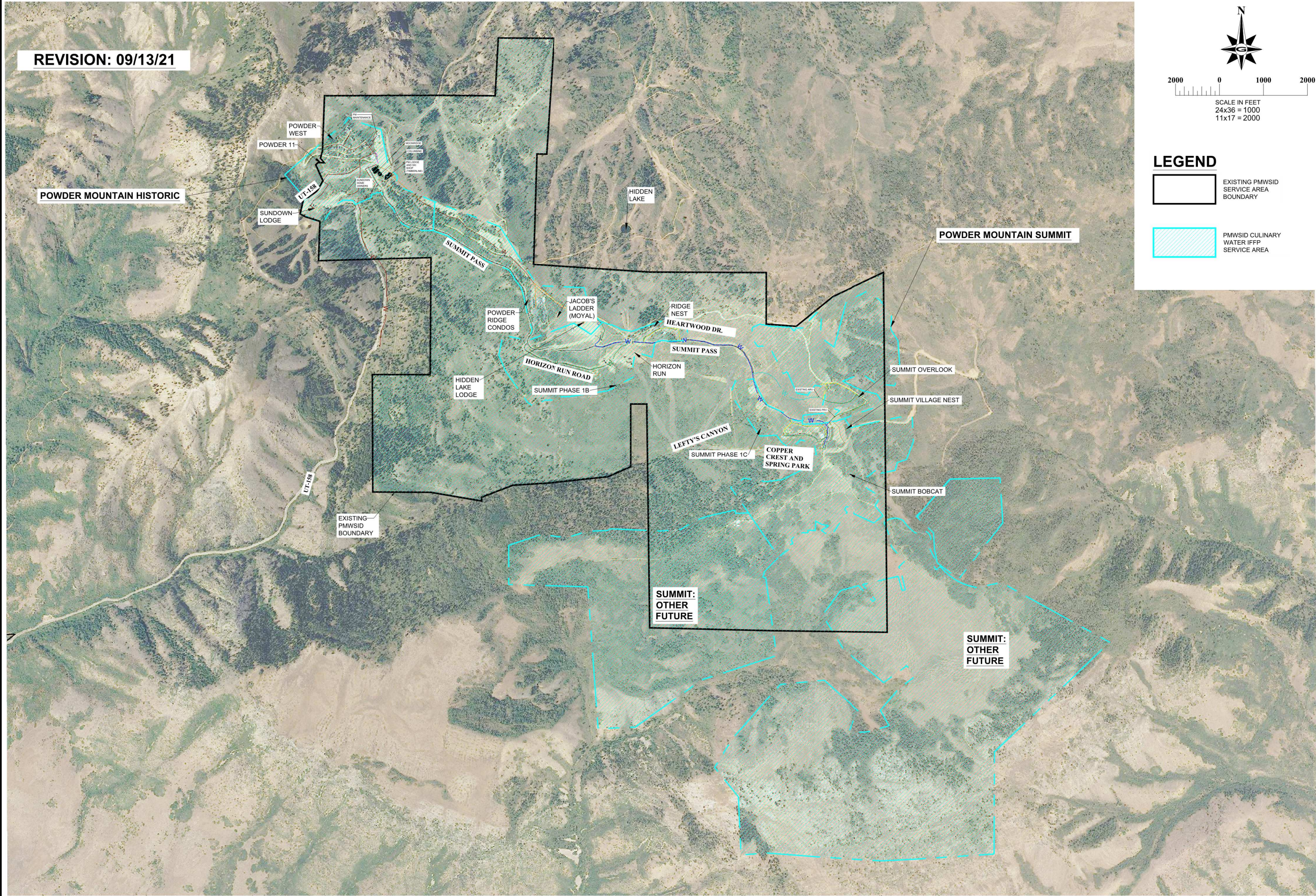




REVISION: 09/13/21



LEGEND

-  EXISTING PMWSID SERVICE AREA BOUNDARY
-  PMWSID CULINARY WATER IFFP SERVICE AREA

GILSON ENGINEERING
 Consulting Engineers & Surveyors
 12401 SOUTH 450 EAST BUILDING C, UNIT 2, DRAPER, UT 84020
 PHONE: (801) 871-9414 FAX: (801) 871-9448

POWDER MOUNTAIN WATER & SEWER IMPROVEMENT DISTRICT

--	--

DATE	REVISIONS

DATE: DECEMBER 2020	DESIGNED/DRAWN BY: JMBP
DRAWING NAME: OVERALL SITE	CHECKED: APPROVED: [Signature]

CULINARY WATER IFFP SERVICE AREA
 PIZZEL SPRING #3 & BOOSTER PUMP STATIONS #1, #2 & #3 REHABILITATION PROJECT
 POWDER MOUNTAIN WATER & SEWER IMPROVEMENT DISTRICT
 WEBER COUNTY, UTAH

REVISION:
 PROJ. # **PMW.015**

WATER 1-1